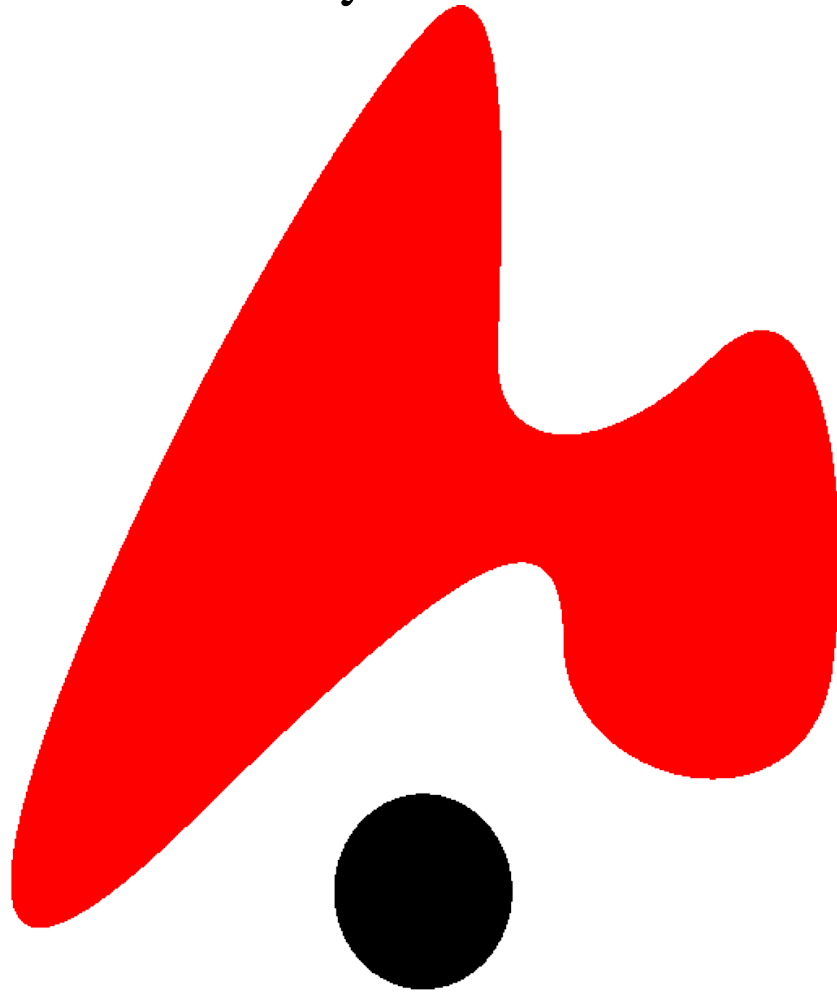


User Guide
For Lyricue 1.9.2



Lyricue

The GNU Lyric Display System

<http://www.adebenham.com/lyricue>

Table of Contents

<u>Lyricue: DocumentationIndex</u>	1
<u>1 Online Documentation</u>	2
<u>What is Lyricue?</u>	2
<u>Who was Lyricue written for?</u>	2
<u>Who was this guide written for?</u>	2
<u>2 Downloading It</u>	3
<u>New Install</u>	3
<u>Upgrade</u>	3
<u>Live CD</u>	3
<u>Debian</u>	3
<u>3 Installing It</u>	4
<u>Extract the files</u>	4
<u>Run the install script</u>	4
<u>4 Starting Interface</u>	5
<u>From your file browser</u>	5
<u>From the command line</u>	5
<u>5 Configuring Interface</u>	6
<u>5.1 Font Preferences</u>	7
<u>5.2 Server Preferences</u>	8
<u>5.3 Backdrop Preferences</u>	9
<u>5.4 Misc Preferences</u>	10
<u>6 Starting Server</u>	11
<u>7 Using Interface</u>	12
<u>7.1 Explain Interface</u>	13
<u>7.1.1 Menu Bar</u>	14
<u>7.1.2 Tool Bar</u>	15
<u>7.1.3 Song List</u>	16
<u>7.1.4 Play List</u>	17
<u>7.1.5 Back Grounds</u>	18
<u>7.2 Doing Things</u>	19
<u>7.2.1 Create A Song</u>	20

Table of Contents

<u>7.2.2 Edit A Song</u>	21
<u>7.2.3 Delete A Song</u>	22
<u>7.2.4 Add To Playlist</u>	23
<u>7.2.5 Remove From Playlist</u>	24
<u>7.2.6 Reorder Songs</u>	25
<u>7.2.7 Display Song</u>	26
<u>7.2.8 Set Background</u>	27
<u>7.3 Advanced Skills</u>	28
<u>Links</u>	29

Lyricue: DocumentationIndex

1 Online Documentation

What is Lyricue?

Lyricue was previously know as LDS (which stood for Lyric Display System.) It is a computer-based replacement for the overheads used to display song lyrics in events such as church services.

Who was Lyricue written for?

Lyricue was originally written for use at Gosford Baptist Church in Gosford, Australia. It was designed for use in Churches and so has features specific to Church usage but can still be used anywhere you need a quick, remotely controlled presentation system.

Who was this guide written for?

- Anyone!

(March 18, 2005, at 11:59 AM)

2 Downloading It

New Install

If you are downloading for the first time grab Lyricue from
<http://www.adebenham.com/lyricue/download/lyricue-1.9.1.tar.gz>

Upgrade

If you are upgrading from a previous install grab it from
<http://www.adebenham.com/lyricue/download/lyricue-upgrade-1.9.1.tar.gz>

Live CD

There is a Live CD that contains Lyricue so you can run/test Lyricue without replacing your existing Windows/Linux install.

It is based on *Morphix* [1]

- To use the Live CD, first download Morphix Combined-Light GUI from
<http://prdownloads.sourceforge.net/morphix/MorphixCombined-LightGUI-0.4-1.iso?download>
- Then grab the minimod from
<http://www.adebenham.com/lyricue/download/MorphixMini-lyricue.mod>
- Next grab http://www.adebenham.com/lyricue/create_livecd
- Finally put them all in a directory and run `./create_livecd` from that directory
- The output will be called `Lyricue.iso` which you can burn to a CD and play with
- Keep Morphix Combined-Light GUI-0.4-1.iso around for upgrades since you can re-use that file

Debian

Add the following lines to your `sources.list` and
'`apt-get install lyricue`'

```
deb http://www.adebenham.com/debian/ ./  
deb-src http://www.adebenham.com/debian/ ./
```

(March 18, 2005, at 11:57 AM)

3 Installing It

Extract the files

- ie. run `tar xvfz lyricue-1.9.2.tar.gz`

Run the install script

- Change into the newly created directory then run `./install`
- This script will check whether you have the necessary dependencies then install the program in `/usr/bin` with the shared components in `/usr/share/lds` and default settings in `/etc/lds`
 - ◆ Note that this is the same whether you are installing for the first time or upgrading

(March 17, 2005, at 04:58 PM)

4 Starting Interface

From your file browser

Navigate to /usr/bin then double-click on *lyricue*

From the command line

run */usr/bin/lyricue*

(March 18, 2005, at 11:57 AM)

5 Configuring Interface

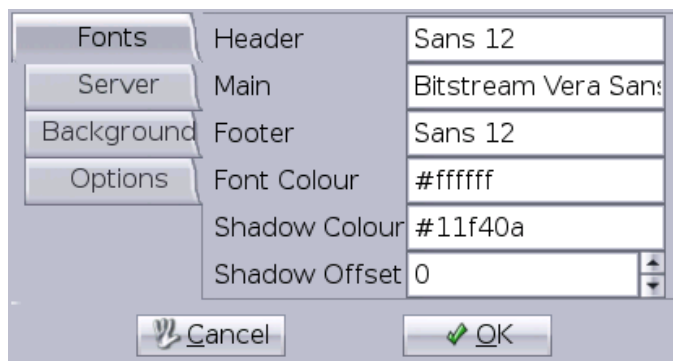
On initial startup, or whenever running for the first time under a new user, Lyricue will pop-up a preferences dialog that has the following sections:

- Font Preferences
- Server Preferences
- Backdrop Preferences
- Misc Preferences

Go through each of them and when finished click OK

(March 17, 2005, at 04:58 PM)

5.1 Font Preferences



From here you can set the various fonts and colours used by the server (ie what is displayed to the congregation)

- Header

The Song name shown at the top of the screen

- Main

The Lyrics/Words of the song/bible verse

- Footer

The Artist/Copyright show at the bottom of the screen

- Font Colour

Colour of all onscreen text

- Shadow Colour

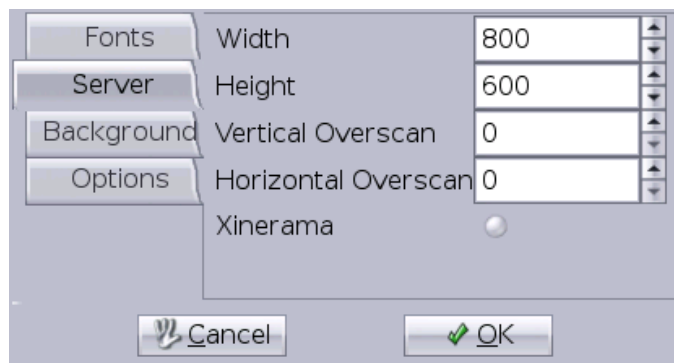
Colour of shadow under lyrics/words

- Shadow Offset

How far down/left of the text is the shadow (set to 0 to disable)

(March 17, 2005, at 04:58 PM)

5.2 Server Preferences



From here you can set sizing properties for the Lyricue Server

- Width

How wide is the screen that the server is running on (in pixels)

- Height

How high is the screen that the server is running on (in pixels)

- Vertical/Horizontal Overscan

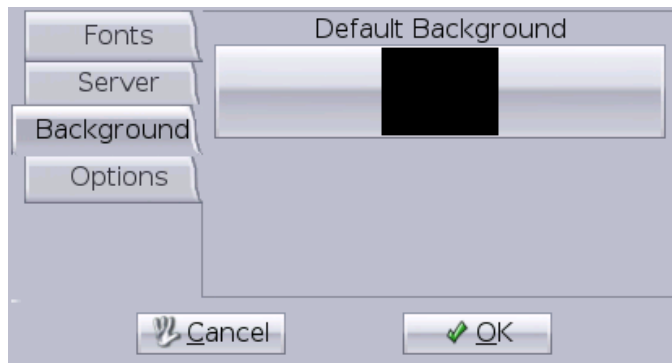
Set to the number of pixels at the top/bottom (or left/right) of the screen that text should not display on. You use these together to create a blank border around the screen in case you don't want text to go to the edges (ie if your projector drops bits off the edges)

- Xinerama

Toggles whether you are running the dual-head as two separate screens (Xinerama mode) or one double-width screen

(March 17, 2005, at 04:58 PM)

5.3 Backdrop Preferences



Not too much to set on this tab, just click on the button to set your default backdrop for the server

(March 17, 2005, at 04:58 PM)

5.4 Misc Preferences



Options that didn't fit elsewhere

- Loop pages

When you hit the end of a song, should clicking 'Next Page' loop back to the beginning or not?

- Audit songs

Should Lyricue record when actions are preformed on the database?

- Dynamic Preview

Minature preview of currently selected item

- Miniview

Minature view of whatever is currently displayed on the server

- Bible

Choose your default bible translation

(March 17, 2005, at 04:58 PM)

6 Starting Server

By default there is a menu item under "Applications" labeled Lyric Server Click this to load the server.

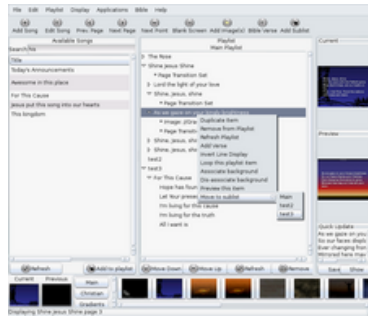
It is a good idea to have lyricue_server load automatically when the user logs in.

How this is done depends on your desktop environment.

Generally you can edit `~/.xinitrc` and add `display=:0.1 /usr/bin/lyricue_server &` to just above where your desktop is loaded (generally just above the last line) and then lyricue_server will automatically run on the second screen (for when you are using xinerama) when you login.

(March 17, 2005, at 04:58 PM)

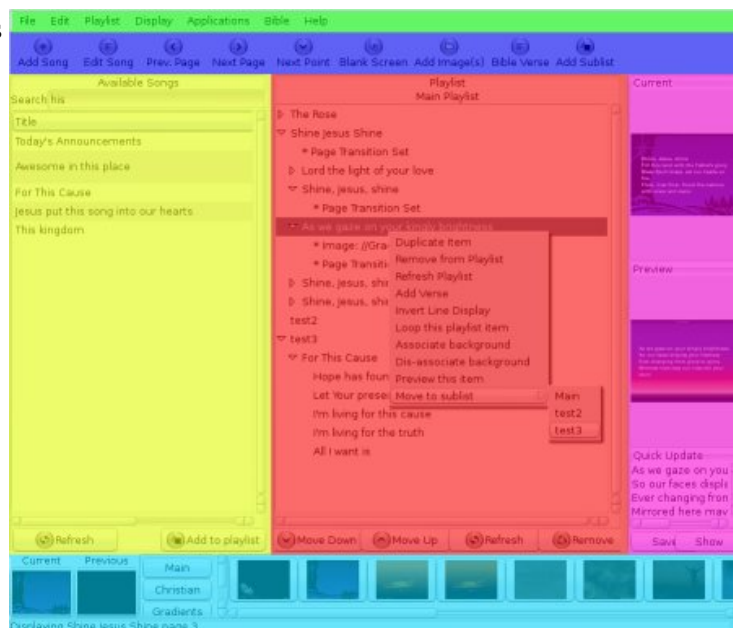
7 Using Interface



(March 18, 2005, at 11:51 AM)

7.1 Explain Interface

The interface is made up of 6 main areas



- Green: Menu Bar
- Blue: Tool Bar
- Yellow: Song List
- Red: Play List
- Purple: Preview Windows
- Cyan: Back Grounds

(March 17, 2005, at 04:58 PM)

7.1.1 Menu Bar

Describe Menu Bar here.

(March 17, 2005, at 04:58 PM)

7.1.2 Tool Bar

Describe Tool Bar here.

(March 17, 2005, at 04:58 PM)

7.1.3 Song List

Describe Song List here.

(March 17, 2005, at 04:58 PM)

7.1.4 Play List

Describe Play List here

(March 17, 2005, at 04:58 PM)

7.1.5 Back Grounds

Describe Back Grounds here.

(March 17, 2005, at 04:58 PM)

7.2 Doing Things

Choose what task you wish to learn about:

- Create A Song
- Edit A Song
- Delete A Song
- Add To Playlist
- Remove From Playlist
- Reorder Songs
- Display Song
- Set Background

(March 17, 2005, at 04:58 PM)

7.2.1 Create A Song

To load up the Add Song Dialog you can click *Add Song* on the Tool Bar or select "Add Song" from the Menu Bar under the *Edit* menu

(March 17, 2005, at 04:58 PM)

7.2.2 Edit A Song

Page *Edit A Song* does not exist.

7.2.3 Delete A Song

Page *Delete A Song* does not exist.

7.2.4 Add To Playlist

Page *Add To Playlist* does not exist.

7.2.5 Remove From Playlist

Page *Remove From Playlist* does not exist.

7.2.6 Reorder Songs

Page *Reorder Songs* does not exist.

7.2.7 Display Song

Page *Display Song* does not exist.

7.2.8 Set Background

Page *Set Background* does not exist.

7.3 Advanced Skills

Page *Advanced Skills* does not exist.

Links

1. morphix.org

Retrieved from <http://localhost/wiki/index.php/Lyricue/DocumentationIndex>

Page collection published on March 18, 2005, at 12:19 PM